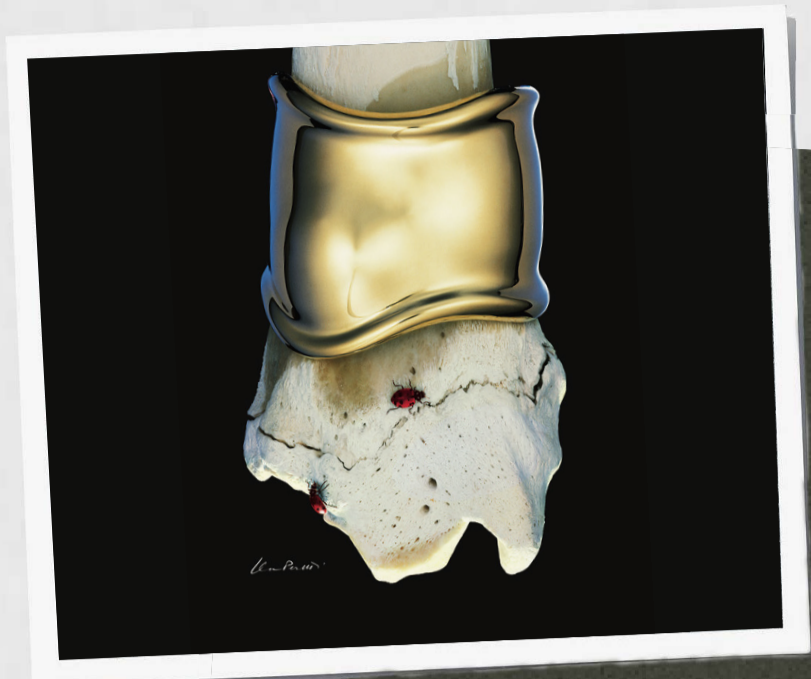


Marion Fasel Shares Her Favorite Elsa Peretti® Essentials

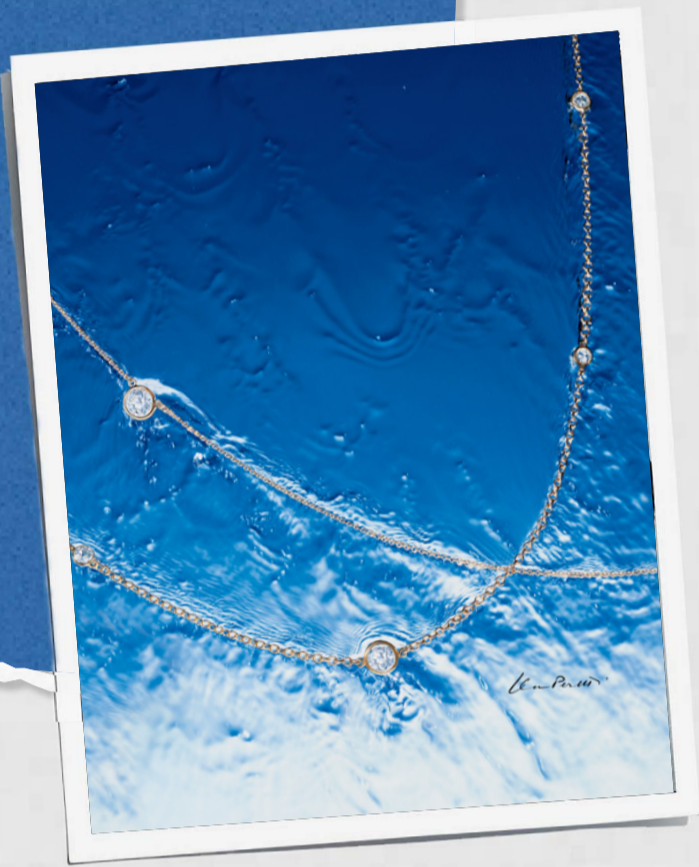
The Bone cuff

Over 50 years ago, Elsa created her empowering Bone cuffs featuring sensuous curves and a contour made to fit over the wrist. Elsa liked to say her fascination with bones began as a child when she saw them in a crypt of a 17th-century Capuchin church, but there was not anything macabre about it. Like the artist Georgia O'Keefe, Elsa was interested in the shapes of bones.



Diamonds by the Yard®

"There is nothing more pretty than a little diamond on a chain," Elsa Peretti told Newsweek when asked about her Diamonds by the Yard® designs in 1977. A range of styles formed the collection, from one bezel set diamond on a choker length chain to a 36-inch-long gold necklace with 12 bezel set diamonds of various sizes mounted at uneven intervals. The name, Diamonds by the Yard®, invoked the joyful spirit of the collection and the new accessibility to diamonds. They could be bought "by the yard."



Open Heart

Elsa got the initial idea for her Open Heart after looking at the shape of a void in a Henry Moore sculpture. "No one else saw the heart there," she explained. "Just me." In order to maintain the purity of the line for her heart shape pendants, Elsa ingeniously decided to put the necklace through the center of the design as opposed to adding a traditional bail on top.



Bottle

One of the first jewels Elsa ever designed was her Bottle pendant. Her inspiration for the piece came from a small vintage vase and memories of vacations in Portofino during the 1960s when women wore gardenias in their hair. Elsa said the idea was to use the bottle pendant as a small vase to carry the flower with some water to keep it alive longer.



Snake

Snakes have been a symbol of love in jewelry since ancient times, but that is not what inspired Elsa's serpent designs. A rattlesnake tail Elsa received from a Texan as a good-luck charm while she was in Switzerland skiing during the late 1960s got her thinking about the beauty of the reptile's segmented tail and sinuous form.

